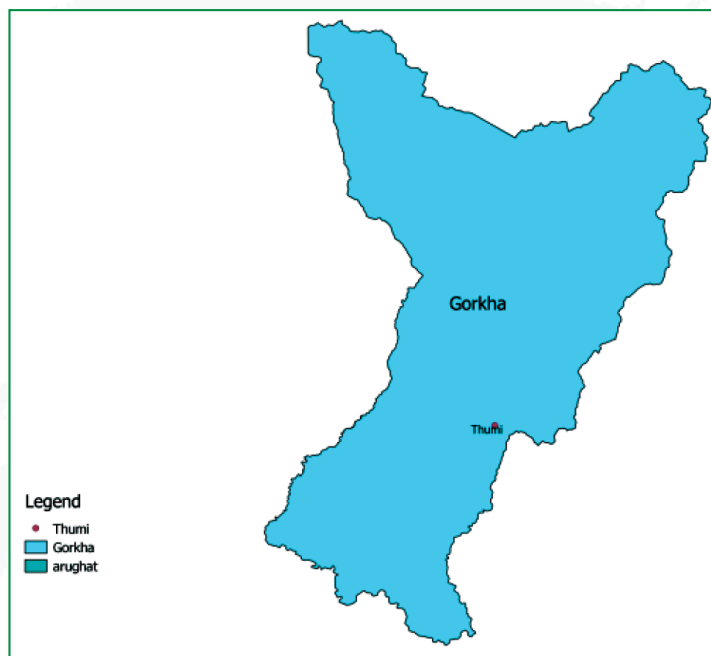


Construction of 49 safer houses in Dalit communities

Thumi is a small village located in the in Gorkha district. The total population of Thumi is 2,572 with majority of Dalit, endangered social groups, and ethnic minorities living. The major source of livelihood was agriculture, daily wages and seasonal labour migration. There was insufficient quality infrastructure such as road, houses, toilet etc. Followed by poor health and hygiene. In general, people of Thumi were living with minimum life standard deprived from the facilities and conjoined with social issues.

On 25 April 2015, an earthquake with the magnitude of 7.8 hit Nepal with the epicentre being in Gorkha district located between capital Kathmandu and Pokhara. More than 400 aftershocks were felt in Nepal including a 7.3 magnitude earthquake on 26 April with the epicentre being in Dolakha district (National Seismological Centre). Nepal suffered extensive damages causing heavy loss of lives and property due to this earthquake and its subsequent aftershocks. The earthquake caused devastating effects on most of the houses in affected districts being Gorkha one of them. The earthquake caused 412 casualties and 1,034 injured in Gorkha district only. (CODEFORNEPAL, 2015). The lives of people were drastically impacted leading to the life and death situation. The total of 67 former Village Development Committee (VDCs) among which 66,506 Households and 271,061 population were directly affected by earthquake. (ICIMOD, 2015).

Map of Thumi

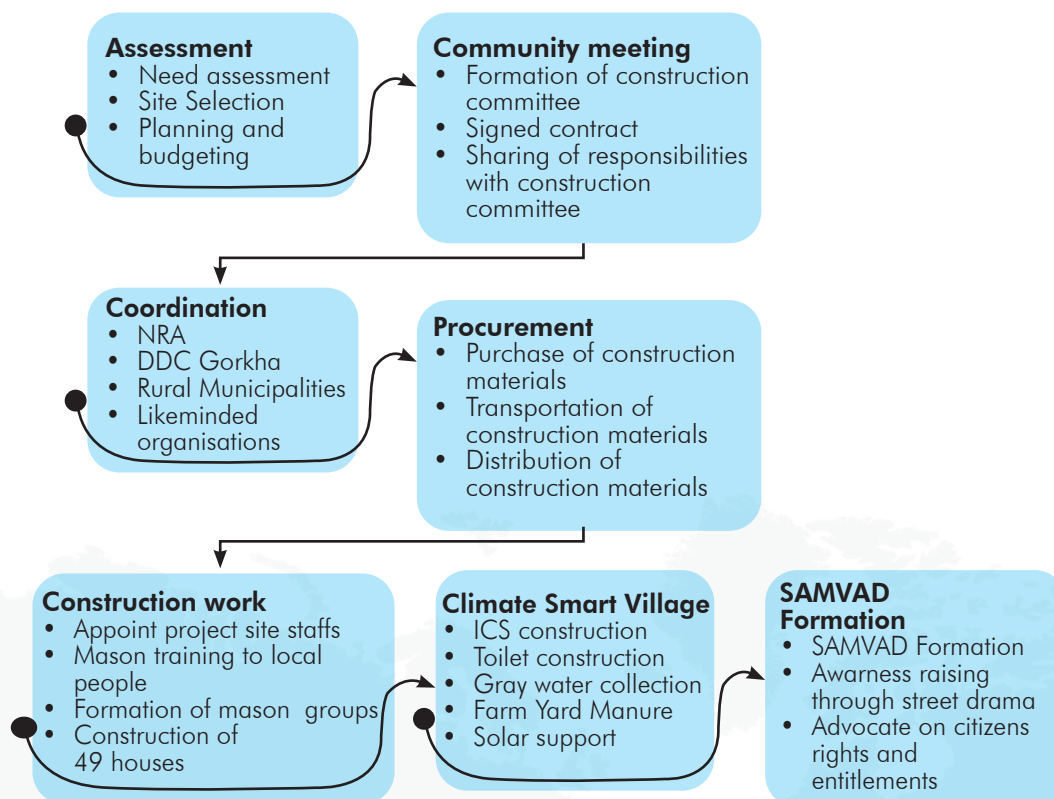


Intervention

To create safer housing after earthquake hazard; with the financial assistance from Felm, SODI and Nepalteam Germany in partnership with SAHAS Nepal impelmented Build Back Better project to build safer houses and make community resilient towards future disaster in Gorkha district with approval from NRA and government line agencies. Build Back Better is a new way of achieving resilience in stronger, safer and inclusive in community to be prepared for future prone disasters. The project constructed 49 safer houses in Dalit communities as well develop "Climate Resilient Model Village" promoting climate resilient technologies such as grey water

management, solar, improved cooking stove (ICS), climate resilient crops, bio-pesticides, farmyard manure, toilet and climate information services. Besides, SAMVAD adolescents' groups were also formed who were responsible for the raising voice against social issues and advocating with local government on citizen's rights and entitlements.

Process for the construction of safer houses



Assistance provided	Quantity	No of people benefited
Construction of safer house	49	209
SAMVAD (Adolescence group) Training	2	23
Study tour	1	27
Drama on social issues	4	378
Hygiene and Sanitation	3	209
Road renovation	1	335
Joint Monitoring with local government	7	14
Mason training	8	8

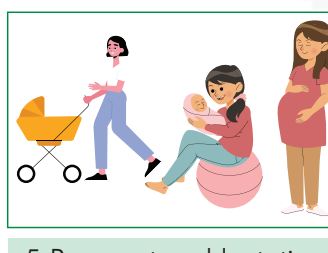
Additional beneficiaries



7 Person with disabilities



39 Elderly people



5 Pregnant and lactating mother



94 Children

Photos



Houses damaged by earthquake



Layout for house construction



Trench level for foundation ready



Foundation level work progress



Women cleaning sand for construction



Monitoring visit from funding partner



House ready for window level



Beam level house construction



Bending reinforcement for beam



Preparing aggregate for construction



Carrying stones for house construction



Roof level house



Completed house



Three room house



Septic tank construction for toilet



Toilet construction



Improved cooking stove



SAMVAD adolescents group



Handing over safer houses and technologies to Rural Municipality



Hand over program in Thumi



Inauguration of safer houses



Appreciation certificate distribution



Solar panel distribution



Thumi after construction of safer houses