



Group of Helping Hands (SAHAS) Nepal
सहयोगी हातहरूको समूह (सहास) नेपाल

SAHAS NEPAL RELIEF OPERATION IN NEPAL EARTHQUAKE 2015



Group of Helping Hands (SAHAS) Nepal



June, 2015

Acknowledgement

We Group of Helping Hands (SAHAS) Nepal would like to Bread for the World (BfdW)- Germany, SODI-Germany, Finnish Evangelical Lutheran Mission (FELM) Finland, Mennonite Central Committee (MCC)USA/Canada, Stromme Foundation (SF) Norway, Norlha-Switzerland, CARE Nepal ,USC Canada, Local Initiatives for Biodiversity, Research and Development (LI-BIRD) Nepal, Nepalese and Friends Cultural Association (NAFCA), California USA ,for entrusting us and providing the support for such a noble cause.

We would like to express our heartfelt thoughts to those who are affected by the devastating earthquake disaster. We gratefully acknowledge the generous assistance and valuable support and assistance received from the government officials, district disaster response committee, Nepal army, Nepal police and other distinguished persons during the relief work have been invaluable.

Last but not the least, deepest appreciation to all the hard working SAHAS staffs whose dedication and support has made the immediate relief response activities effectively possible.

Surendra K. Shrestha, PhD
Executive Director

Table of Contents

Acknowledgement	2
Table of Contents	3
1 Background	4
1.1 Earthquake Impact in SAHAS Working Areas.....	5
1.2 SAHAS Nepal Response	6
1.2.1 Earthquake immediate response action:	6
1.3 District Wise Major Relief Operation:	10
1.3.1 Rasuwa:	10
1.3.2 Gorkha:	10
1.3.3 Dhading:	10
1.3.4 Tanahu:	11
1.3.5 Lalitpur:	11
1.3.6 Okhaldhunga:	11
1.3.7 Makwanpur:	11
1.3.8 Udayapur:	12
1.3.9 Dolakha:	12
1.4 SAHAS Nepal Relief Operation Support Funding Partners.....	12
Annexes:	15
Annex 1. Human casualties and damage in SAHAS working districts	15
Annex 2. List of supported VDCs and households	16
Annex 3. List of Volunteers	18
Annex 4. Photos	19

1 Background

Nepal lies in the Hindu Kush Himalayan (HKH) region. As the country lies near the boundary of the Eurasian and Indian tectonic plates which are moving in opposite direction, seismic activity is very high in the region. Nepal has been ranked as the 11th most vulnerable country to earthquake, and Kathmandu the most-risky city (Echo Factsheet by European Commission, 2015) and past records have shown that Nepal can expect high magnitude earthquake of 7.5 to 8 Richter scale every 40 years (DPNet Nepal).

On 25th April, 2015 at 11:56 local time a strong earthquake with the magnitude of 7.8 magnitude hit Nepal with the epicenter in Saurpani Gorkha district located between capital Kathmandu and Pokhara. More than 300 aftershocks have been continuously felt in Nepal including a 7.3 magnitude earthquake on 26th April, 2015 at 12:54 NST (National Seismological Centre).

Another major quake occurred on 12th May, 2015 at 12:52 NST with 7.3 Magnitude (National Seismological Centre) near Chilankha Village Development Committee (VDC) in Dolakha district causing further significant damage and loss of life.

A total of 39 districts were affected by these earthquakes. Among all, all districts in Kathmandu Valley, Sindhupalchowk, Rasuwa, Gorkha, Dolakha, Dhading, Nuwakot, Ramechhap, and Kavre are identified as the most affected districts.

Till 16th of June, 2015; the country's death toll had reached 8789 (Male: 3934 and Female: 4849) and injured population reached 22,309. Till date, 2656 government houses have been fully destroyed and 3622 have been partially damaged, while 508734 public houses have been fully damaged and 283145 have been partially affected throughout the nation. The earthquakes caused extensive damage to infrastructures as well as psychological trauma to the people. Millions of local residents struck by the quake were forced to spend night in open spaces and thousands of people become homeless. In some areas more than 90% household were completely damaged and people were in acute need of relief programs.

After the nation was hit by devastating earthquake, different countries and various humanitarian organizations all over the world showed a great concern and helped Nepal earthquake victims in every ways possible. The foreign aid to Nepal earthquake victims has helped to minimize this national tragedy to greater extent. From monetary help to basic needs (food, shelter and safety), rehabilitation, reconstruction and renovation; relief materials are dispatched to each earthquake prone areas with the help of countless national and international volunteers. The unified effort of various organizations has helped restore earthquake survivors' life to normal. Among various non-governmental organizations, **SAHAS Nepal** has been actively helping out the earthquake victims with immediate response of relief distribution. After the successful accomplishment of the immediate relief response, SAHAS has been working for the second phase of disaster early recovery (rehabilitation and reconstruction).

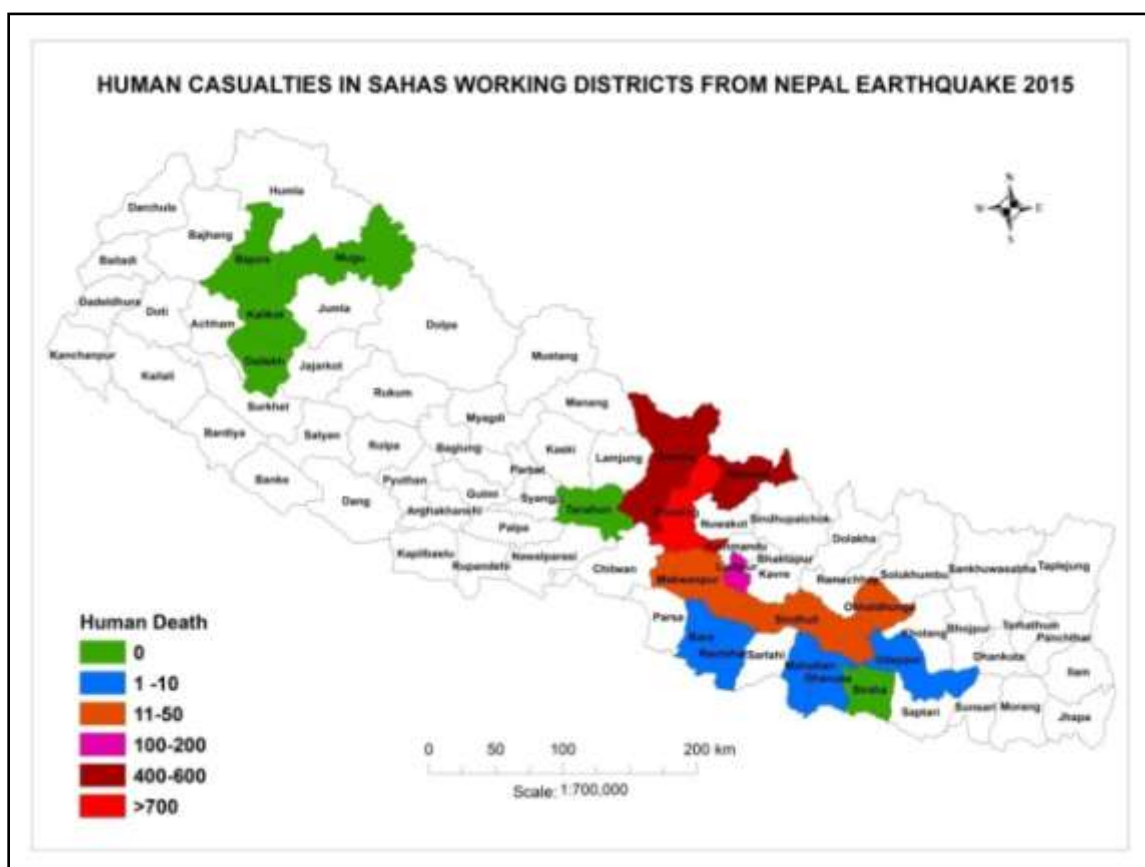
1.1 Earthquake Impact in SAHAS Working Areas

Among 18 working districts of SAHAS Nepal, 6 districts namely Gorkha, Dhading, Rasuwa, Lalitpur, Okhaldhunga, and Makwanpur are heavily affected. More than 80 per cent of the houses in SAHAS working areas of Rasuwa, Gorkha, Dhading and Okhaldhunga have been destroyed or are in dilapidated state. Earthquake followed by rain has triggered landslide and wrecked more houses in the working areas.



Photo: Thulogau VDC of Rasuwa change into rubble after 25th April earthquake

Death toll of Community Based Organization (CBOs) members formed by SAHAS Nepal in Dhading (39), Okhaldhunga (7), Makwanpur (3) has been reported. Thousands of local people were badly injured. People are living in the open spaces and waiting for support and help for their life. The most immediate needs are food assistance, shelter and medical treatment.



Map 1: Human casualties in SAHAS working districts

Note: (map prepared on the basis of Nepal Disaster Risk Reduction Portal data retrieved on 20 May)

1.2 SAHAS Nepal Response

One of the first steps done by SAHAS-Nepal is preliminary assessment of SAHAS Nepal staff safety and offices in affected working districts. There were 157 SAHAS staffs working in 18 districts. After the earthquake, all 156 staff members were reported safe except for Ms. Sunita Tamang of Rasuwa who was killed during the devastating Earthquake of 25 April 2015.

SAHAS has taken initiatives in establishing Sunita Trust Fund (voluntarily contribution) for Ms. Tamang's daughter's education.

1.2.1 Earthquake immediate response action:

SAHAS has immediately mobilized staff members to assess the impact of earthquake in SAHAS project areas and instantly initiated some major relief operation in 57 VDCs of 9 districts. In total 11263 households were provided with relief materials with the support of 10 organizations (9 International and 1 National).

The following major activities were immediately launched in the affected areas by SAHAS Nepal:

I. Temporary Shelter

With aim to provide immediate shelter to the affected families, a total of 7555 tarpaulins, 1770 pieces of blankets, 2982 and 450 pieces of mattress and mosquito nets respectively were distributed in 9 affected districts. Besides shelter, 300 sets of kitchen utensils (pans, pots, plates, spatulas, ladles, buckets and jugs) were also distributed in Okhaldhunga district.



Rasuwa woman expressing their gratitude after receiving tarpaulins



Small boy taking the tarpaulin supported by SAHAS in Dhading district

II. Basic Food Supply

Most of the affected families were in dire need of food. In order to overcome the immediate need, basic food packages were distributed to 11263 households. A total of 328330 kg rice, 4110

kg beaten rice, 42182 kg pulses, 3 kg soybeans, 22550 litres oil, 21423 kg salt, 152 packets of baby food (super flour, cerelac and lactogen), 1092 packets of dalmot and 1000 kg of sugar were distributed to affected families.



SAHAS Project Coordinator briefing the distribution of relief materials and affected households in Okhaldhuna district



Rasuwa CA member participating in distribution of relief materials



Woman carrying supported relief food items in Dhading district



SAHAS Staffs putting ink mark on fingernails of people after relief distribution in Gorkha district

III. Hygiene Kits distribution

Access to safe water has been jeopardized and drinking water has been contaminated. In order to minimise the risk of disease outbreaks and spreading of communicable diseases some hygiene kits were also distributed immediately. A total of 3560 chlorinated tablets, 19107 soaps, 550 toothbrush, 550 toothpaste, 550 ORS and 550 medical tapes were distributed.



SAHAS staffs and volunteers packing the hygiene kits

IV. Blood Donation

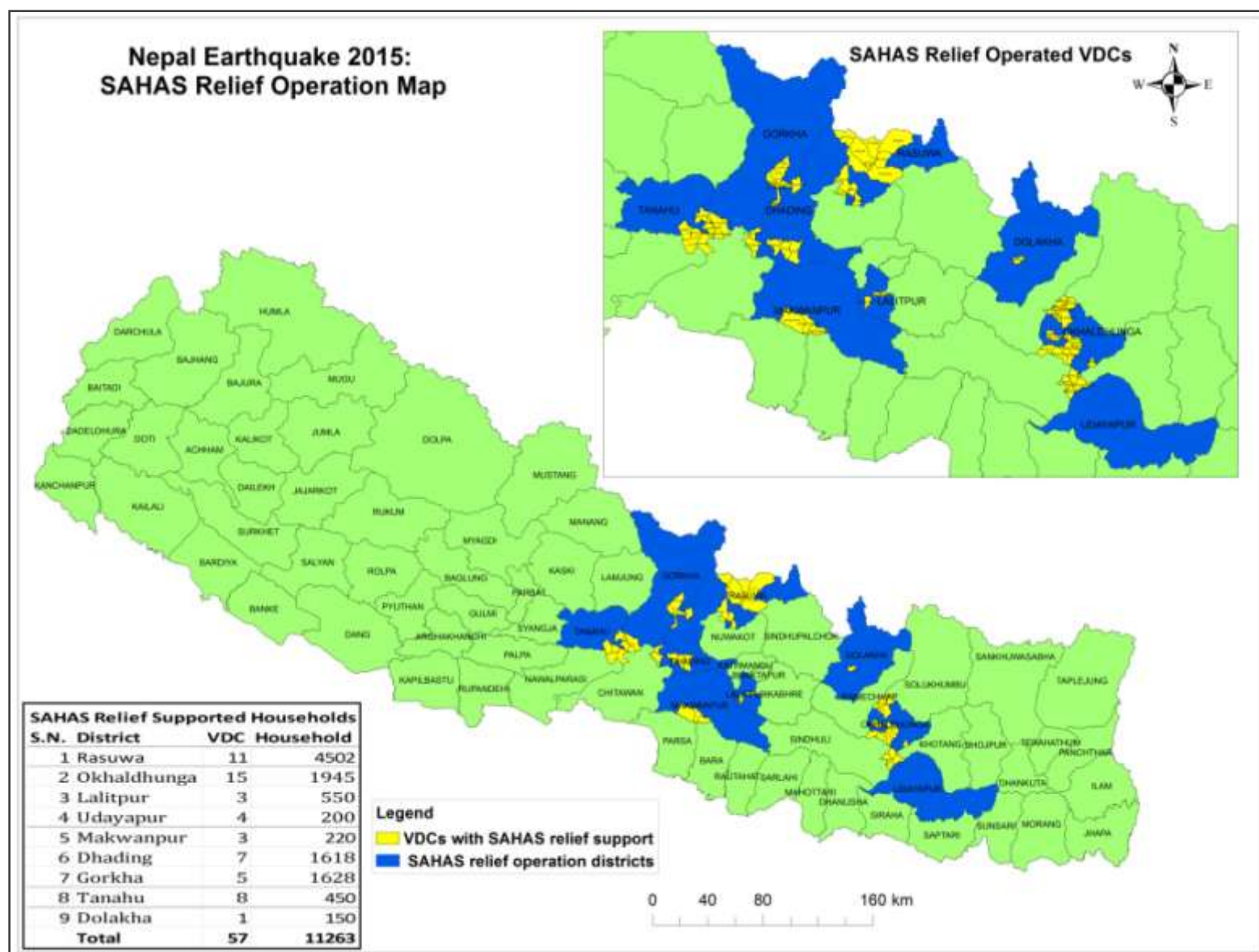
Blood donations are a huge part of emergency preparedness. However, emergency preparedness is not enough in Nepal and keeping an adequate supply of blood became a challenge. Immediately after the earthquake disaster, SAHAS has organized a blood donation program. SAHAS staffs including national and international volunteers participated in blood donation program.



SAHAS staffs and volunteers testing the health before the blood donation



SAHAS staffs participating in blood donation program



Map 2: SAHAS relief operation districts, VDCs and supported households

1.3 District Wise Major Relief Operation:

1.3.1 Rasuwa:

Rasuwa district comprises 43300 populations with 9778 households. Rasuwa is the worst-hit working district of SAHAS Nepal with the total death toll of 660 and 771 injured as of 25st May, 2015. (Source: Nepal disaster Risk reduction portal). In total 4502 households of 11VDCs in Rasuwa (Thulogau, Ramche, Dandagau, Gatlang, Goljung, Bhorle, Thuman, Birdim, Chilime, Syabru and Chilime) were supported with earthquake relief materials from SAHAS.

SAHAS Nepal coordinated with six funding partners namely SODI Germany, Stromme Foundation Norway, USC/ Canada, Norlha Switzerland, Li-BIRD and NAFCA for the immediate relief operation in Rasuwa district. During the immediate relief operation; these 11 VDCs were supported with food items (135060 kg rice, 13506 kg pulses, 9004 cooking oil, 9004 kg iodine salt pack, 54 packet baby super flour) and non-food items (2500 tarpaulins and 840 pieces blankets).

1.3.2 Gorkha:

Gorkha district the epicentre of April 2015 Nepal earthquake is one of the most affected districts where 448 died and 952 people injured. SAHAS operated relief operation in 5 VDCs of Gorkha district namely Aaruchanute, Aaruarbang, Thumi, Lapu and Bhumichowk with support from funding partner Finnish Evangelical Lutheran Mission (FELM)-Finland.

In total 1628 households of five VDCs were supported with food items of 48840 kg rice, 6371 kg pulses, 3256 litres cooking oil, 3256 kg iodine salt and 282 kg Dalmot and non-food items (515 tarpaulins, 3560 chlorinated tablets and 4461 soaps).

1.3.3 Dhading:

Dhading district has the highest number of death toll among all working districts of SAHAS, with 733 dead and 1218 injured. To support the earthquake affected families; immediate relief materials were supported in 1618 households of Dhading. The relief distribution covered households of Phulkharka, Gajuri, Peeda, Budathum, Jogimara, Beninghat and Salyantar VDC. They were provided with food supplies as rice, beaten rice, pulses, cooking oil, iodine salt, Dalmod (packet) and sugar including tarpaulins for shelter, blankets and soap for hygiene and sanitation.

For distribution, 46740 kg of rice, 930 kg or beaten rice, 4277 kg of pulses, 4098 litre of cooking oil, 3098 kg of iodine salt, 186 packets of Dalmot and 1000 kg of sugar were food items dispatched. Additionally, 1650 tarpaulins, 300 blankets, 750 mattresses and 11074 soaps were also provided. SAHAS coordinated three international partner organizations Finnish Evangelical Lutheran Mission (FELM)-Finland, Stromme Foundation-Norway, CARE Nepal and one local partner Chamber of Commerce-Aanbukhairini in order to support the affected families.

1.3.4 Tanahu:

In this region, no one was killed yet 27 were injured. 4877 private houses collapsed due to the earthquake. In total, 450 households from 8 VDCs of Tanahu (Aabukhairini, Chipchipe, Chimkeswori, Devghat, Deurali, Bandipur, Baidi and Kota) were supported with food and non-food items, i.e. with 12535 kg rice, 1063 kg pulses, 3120 kg beaten rice, 624 packet Dalmod, 878 litre cooking oil, 751 kg iodine salt, 127 pieces tarpaulins and 2540 pieces soap.

1.3.5 Lalitpur:

Lalitpur district is also one of the most affected districts in the Kathmandu valley where 177 were killed and 3052 were injured during the quake. In total 550 households from three VDCs (Nallu, Bhardeu and Bhattedanda) were supported with necessary relief support materials with support from Bread for the World (BfdW), Germany. In these three VDCs food items such as 16500 kg rice, 1650 kg pulses, 1100 litres cooking oil, 1100 pack iodine salt, 98 packets baby food and non-food items including 550 tarpaulins and 550 hygiene kits were provided.

In addition, one orphanage house name as Surya Children Social Welfare Centre located in Jawalkhel was also supported even though the victims are out of SAHAS working areas. Surya Children Social Welfare Centre is taking care of 20 orphan children. SAHAS Nepal has provided relief materials of 330 kg rice, 13 packets baby food, 20 liters oil, 6 kg salt, 16.5 kg pulses and 20 pairs of slippers with the support of Stromme Foundation to Surya Children Social Welfare Centre.

1.3.6 Okhaldhunga:

Okhaldhunga district a pioneer base of SAHAS is also badly affected by this earthquake. In total, 20 people have lost their lives and 61 got injured. SAHAS coordinated with three funding partners namely Bread for the World (Germany), Mennonite Central Committee (USA) and Local Initiatives for Biodiversity, Research and Development (LI-BIRD Nepal) for immediate relief operations.

In total 1945 households of 15 VDCs were supported with immediate relief materials. Six VDCs of Illaka 6 (Bhussinga, Chandeswori, Khijikati, Khijiphalate, Rajani I and II and Rawadolu); 3 VDCs of Illaka 8 (Ranibam Palapu and Phulbari); Ubhu VDC of Illaka 11 and 5 VDCs of Ilaka 9 (Balakhu, Sisneri, Mulkharka, Chyanam and Katunje) were provided with food (58350kg rice, 12860kg pulses, 3508 litre cooking oil and 3508kg iodine salt) and non-food items (1756 tarpaulins, 1424 blankets, 1424 mattresses, 450 mosquito nets, 300 torch lights, 300 pans, 300 pots, 1200 plates, 300 spatulas, 300 Laddle, 300 buckets, 300 jugs and 600 soaps)

1.3.7 Makwanpur:

During the earthquake; 33 people died and 229 were injured. In coordination with Stromme Foundation-Norway, 3 VDCs (Handikhola, Churiyamai and Padampokhari) were supported with relief materials. Food supplies include 75 kg rice, 60 kg beaten rice, 5 kg pulses, 3 kg soybean, 6 litre cooking oil, 6 packets iodine salt, 6 kg sugar and 1.5 kg tea. Non-food supplies are 117 tarpaulin sheets, 238 blankets

and 160 mattresses. In total, 220 households were provided with these items for providing immediate disaster relief assistance in Makwanpur district.

1.3.8 Udayapur:

A person was killed and 35 were injured in Udayapur district. In total 200 households from 4 VDCs (Lekhani, Hardeni, Sorung and Mayankhu) were provided with relief materials with support from funding partner, Bread for the World. For the relief support to this area, a total of 6000 kg rice, 600 kg pulses, 400 litre cooking oil and 400 kg iodine salt and 200 tarpaulin sheets were distributed.

1.3.9 Dolakha:

SAHAS also immediately launched the relief operation in Dolakha, a district out of SAHAS working area. Dolakha (76 km northwest of Kathmandu), is one of the severely hit districts by 7.3 Richter scale aftershock that struck Nepal on 12th May, 2015. Moreover, 170 people died and 662 were badly injured in this district due to destructive earthquake followed by landslide (*Nepal Disaster Risk Reduction Portal*).

Besides SAHAS working districts, SAHAS immediately launched the relief operation in Sunkhani VDC. SAHAS coordinated with LI-BIRD in order to provide relief packages for 150 households that include food items (4500 kg rice, 750 kg pulses, 300 litre cooking oil and 300 kg iodine salt) and 150 tarpaulins for shelter.

1.4 SAHAS Nepal Relief Operation Support Funding Partners

SAHAS Nepal coordinated with 9 international and 1 national organizations for the implementation of immediate relief response action. INGOs such as Finnish Evangelical Lutheran Mission (FELM)-Finland, SODI-Germany, Norlha-Switzerland, Stromme Foundation-Norway, USC Canada, Bread for the World (BfdW)-Germany, Mennonite Central Committee (MCC)USA/Canada, CARE Nepal, Nepalese and Friends Cultural Association (NAFCA)-California USA and National level NGO name as Local Initiatives for Biodiversity Research and Development (LI-BIRD) cooperated for the relief program. In addition, Ms. Sabitri Bohora has supported 287 packets of super flour (Baby food) for earthquake affected families.

Besides funding partners, SAHAS has also coordinated with district disaster response committee (DDRC), respective Government officials including Constituent Assembly (CA) members, Chief District officers, Local Development Officers, Local Social Workers, and likeminded institutions of 9 districts for relief operation. SAHAS has implemented relief activities with approval from the relevant authorities.

Table 1: Summary sheet on relief supported districts and funding partners

S.N.	District	Funding Partners
1	Rasuwa	SODI-Germany + Norlha-Switzerland
		Stromme Foundation- Norway
		USC Canada/LI-BIRD
		Local Initiatives for Biodiversity, Research and Development (LI-BIRD)
		Nepalese and Friends Cultural Association (NAFCA), California USA

2	Okhaldhunga	Bread for the World- Germany
		Mennonite Central Committee (MCC) USA
		LI-BIRD
3	Lalitpur	Bread for the World- Germany
		Stromme Foundation Norway
4	Udayapur	Bread for the World- Germany
5	Makwanpur	Stromme Foundation Norway
6	Dhading	Finnish Evangelical Lutheran Mission (FELM)-Finland
		Stromme Foundation- Norway
		CARE Nepal
		Chamber of Commerce, Aanbukhairini
7	Gorkha	Finnish Evangelical Lutheran Mission (FELM)-Finland
8	Tanahu	Finnish Evangelical Lutheran Mission (FELM)-Finland
9	Dolakha	Local Initiatives for Biodiversity, Research and Development (LI-BIRD)
	Total	

Table 2: List and quantity of distributed relief materials per district

S. N.	District	Supported Households	Food items	Shelter	Hygiene Kits	Kitchen Utensils
1.	Rasuwa	4502	135060kg rice, 13506kg pulses, 9004 litre cooking oil, 9004 kg iodine salt and 54 packets super flour (baby food).	2500 tarpaulins and 840 mattresses.		
2.	Gorkha	1628	48840kg rice, 6371kg pulses, 3256 litre cooking oil, 3256kg iodine and 282 pack Dalmot.	515 tarpaulins,	3560 chlorinated tablets and 4461 pieces soaps.	
3.	Tanahu	450	12535kg rice, 3120kg beaten rice, 1063kg pulses, 878 litre cooking oil, 751kg iodine salt and 624 pack Dalmot.	117 tarpaulins	1190 soaps	
4.	Makwanpur	220	75kg rice, 60kg beaten rice, 5kg pulses, 3kg soybeans, 6 litre cooking oil and 6kg iodine salt.	117 tarpaulins, 238 blankets and 160 mattresses.		
5.	Lalitpur	550	16500 kg rice, 2750 kg pulses, 1100 litre cooking oil and 1100 kg iodine salt, 98 packets baby food (super flour)	550 tarpaulins	550 hygiene kits (toothbrush+ toothpaste + ORS+ Handyplast + Soap	
6.	Udayapur	200	6000kg rice, 600kg pulses, 400 litre cooking oil and 400kg iodine salt.	200 tarpaulins		
7.	Dhading	1618	46470kg rice, 930kg beaten rice, 4277kg pulses, 4098 litre cooking oil, 3098kg iodine salt, 186 pack Dalmot and 1000kg sugar.	1650 tarpaulins, 300 blankets, 750 mattresses and 11074 soaps.		
8.	Okhaldhunga	1945	58350kg rice, 12860kg pulses, 3508 litre cooking rice and 3508 kg iodine salt.	1756 tarpaulins, 1232 blankets, 1232 mattresses, 450 mosquito nets and 300 torch lights	1832 soaps	300 pans, 300 pots, 1200 plates, 300 spatulas, 300 Ladle, 300 buckets, 300 jugs
9.	Dolakha	150	4500kg rice, 750kg pulses, 300 litre cooking oil and 300kg iodine salt.	150 tarpaulins		

Annexes:

Annex 1. *Human casualties and damage in SAHAS working districts*

S.N.	District	Total number of houses	Total population	Dead	Injured	Government houses fully destroyed	Government houses partially destroyed	Public houses fully destroyed	Public houses partially destroyed
1	Bajura	24908	134912	0	0	0	0	0	1
2	Bara	108635	687708	5	1	1	0	50	0
3	Dailekh	48919	261770	0	0	0	19	1	216
4	Dhading	73851	336067	718	702	93	58	43741	18720
5	Dhanusha	138249	754777	1	19	0	8	4	47
6	Gorkha	66506	271061	440	0	45	16	44650	13430
7	Kalikot	116415	552583	0	0	3	17	4	15
8	Lalitpur	109797	468132	182	2529	168	136	16344	5851
9	Mahatari	111316	627580	3	10	10	14	72	79
10	Makwanpur	86127	420477	33	127	46	177	15012	17042
11	Mugu	43757	224506	0	0	0	0	0	0
12	Okhaldhunga	32502	147984	19	53	1	191	10031	3107
13	Rasuwa	9778	43300	581	753	0	0	7040	2410
14	Rautahat	106668	686722	3	26	0	9	70	199
15	Sindhuli	57581	296192	14	148	60	216	18197	10028
16	Siraha	177962	637328	0	24	0	20	0	540
17	Tanahu	78309	323288	0	21	22	54	4927	15918
18	Udayapur	66557	317532	1	29	52	460	95	516
	Total	1457837	7191919	2000	4442	501	1395	160238	88119

Source: Nepal Disaster Risk Reduction Portal, GoN (Retrieved date: 20 May 2015)

Annex 2. *List of supported VDCs and households*

S.N .	District	Illaka	VDC Name	Number of VDC	Supported Household
1	Rasuwa		Thulogau	11	376
			Ramche		700
			Dandagau		538
			Gatlang		515
			Goljung		325
			Bhorle (AanpChaur-ward 4)		240
			Thuman		308
			Birdim		184
			Chilime		451
			Syabru		752
			Timure		113
			Total 1	11	4502
2	Okhaldhunga	Illaka 6	Bhussinga	15	34
			Chandeshwori		34
			Khijikati		30
			Khijiphalate		177
			Ragani		364
			Rawadolu		16
		Illaka 8	Raniban		250
			Palapu		200
			Phulbari		150
		Illaka 9	Balakhu		125
			Sisneri		100
			Mulkharka		75
			Chyanam		75
			Katunje		75
		Illaka 11	Ubhu		240
			Total 2	15	1945
3	Lalitpur		Nallu		220
			Bhardeu		100
			Bhattedanda		230
			Total 3	3	550
4	Udayapur		Lekhani	4	90
			Hardeni		40

			Sorung		40
			Mayankhu		30
			Total 4		200
5	Makwanpur		Handikhola	3	52
			Hetauda Municipality (Ward 16-17)		
			Churiyamai		74
			Hetauda Municipality (Ward 12-15)- Padampokhari		94
			Total 5	3	220
6	Dhading		Phulkharka	7	1000
			Gajuri (ward 4)		47
			Peeda (ward2 &3)		46
			Budathum		370
			Jogimara		43
			Benighat		43
			Salyantar		69
			Total 6	7	1618
7	Gorkha		Aaruchanute	5	1131
			Aaruarbang		188
			Thumi		105
			Lapu		63
			Bhumlichowk		141
			Total 7	5	1628
8	Tanahu		Aanbukhairini	8	127
			Chipchipe		62
			Chimkeswori		1
			Devghat		50
			Deurali		10
			Bandipur (ward 2,8,9,10 &11)		54
			Baidi		46
			Kota		100
			Total 8	8	450
9	Dolakha		Sunkhani (ward 2,3,4,5,7,8,9)	1	150
			Total 9	1	150
			Grand Total	57	11263

Annex 3. ***List of Volunteers***

S.N.	Name
1	Alok Shrestha
2	Mr. Ashok Lama
3	Mr. Bibek Yadav
4	Mr. Bipin Lama
5	Mr. Dawa Lama
6	Mr. Dawa Nurpu Tamang
7	Divya Jyoti Pokharel
8	Mr. Furpu Sirgi Tamang
9	Mr. Kami Gara Tamang
10	Mr. Mingmar Tamang
11	Ms. Neera Gurung
12	Ms. Nikita Shrestha
13	Ms. Pearly Wong
14	Mr. Pratap Lama
15	Mr. Pratik Gautam
16	Mr. Rabin Rawal
17	Mr. Rajan Lama
18	Ms. Sajeena Maharjan
19	Mr. Sandip Shrestha
20	Mr. Sanjay Lama
21	Mr. Santosh Lama
22	Mr. Uday Lama

Annex 4. **Photos**



Old woman in deep grief sitting in front of her completely destroyed house in Okhaldhunga



Woman standing in front of destroyed house in Lalitpur



Damaged house in Udayapur



Completely damaged school in Dandagau, Rasuwa



Local people trying to take their stuffs from the rubble



SAHAS staff assessing the status of quake damage



Packing tarpaulin in SAHAS central office for dispatch



SAHAS staffs and volunteers packing the hygiene kits



Rasuwa youths volunteering in SAHAS relief operation



Loading relief materials to dispatch in the field



Unloading relief materials(food items) in the field



Unloading relief materials(cooking utensils) in the field



Coordination meeting at Phoolkharka, Dhading for relief distribution.



Affected families in a queue to receive relief materials, Rasuwa.



SAHAS staffs checking the affected household list



Ms. Hanalena and Mr. Heiki of FELM and SAHAS team participating in distribution of relief materials at Aarughat, Gorkha



Staffs putting ink mark on fingernails of people after relief distribution (Bhulmichowk, Gorkha)



Nepal army and police helping in distribution of relief materials



Distribution of relief materials to affected families



SAHAS staffs checking the list and entering the name of the relief supported families



Women carrying sacks of rice (Phoolkharka, Dhading).



Distribution of relief materials to affected families in Lalitpur



SAHAS staffs, Nepal police & government officials finalizing the affected families checklist for distribution of relief materials in Udayapur



SAHAS Project Coordinator briefing the distribution of relief materials and affected households



Chinese people helping unloading the relief materials provided by SAHAS in Rasuwa



Rasuwa CA member showing his gratitude to SAHAS team before the distribution of relief materials in Rasuwa



Mothers were supported with baby food for their children



Nepal army and police helping in arranging the relief distribution



Relief support distribution in Makwanpur



International volunteer (Ms. Pearly Wong) participating in distribution of relief materials to affected families in Lalitpur



Affected families taking their relief materials



Affected families with their supported relief materials



Victim family taking their supported relief items



Smile and happiness after getting relief materials



Relief materials bringing the smile in Old woman



Children carrying relief materials



Smile with a relief materials



Families with a relief materials



Woman with a relief materials



Observing Damage building of Surya Children Welfare Service Center Nepal by SAHAS Executive Director



SAHAS staff providing relief materials to Surya Children Welfare Service Center Nepal



Volunteers of Rasuwa ready to bring relief materials in Rasuwa

