

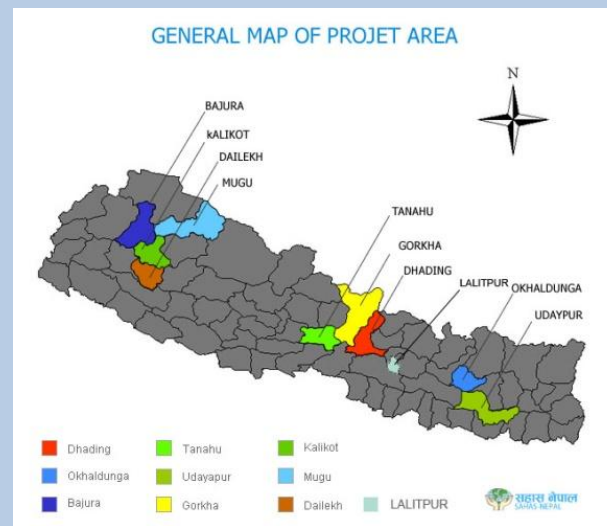
- Trail Bridge Programme
- Institutional Network Capacity Building Programme
- Scholarship programme
- Capacity building of network organisations



THE TEAM

SAHAS Nepal's team members are well trained professionals from various backgrounds like agriculture, livestock, forestry, rural development, participatory approaches, sociology and finance representing workforce diversity in terms of caste, ethnicity and gender. For many years, they have been deeply committed to rural community development. Team members regularly share their expertise with partners, stakeholders and other professionals in trainings, seminars and workshops.

PROJECT AREA



Group of Helping Hands (SAHAS) Nepal
 P.O. Box 8975, EPC 1590,
 Lalitpur, Nepal
 Tel: 00977-1-5523776
 Fax: 00977-1-5523303
 Email: sahasnepal@wlink.com.np
 Web: www.sahasnepal.org.np

Govt.Regd. No. 643/053/054 Lalitpur

SWC Regd.No. 9882

Group of Helping Hands (SAHAS) Nepal



PROJECT CYCLE

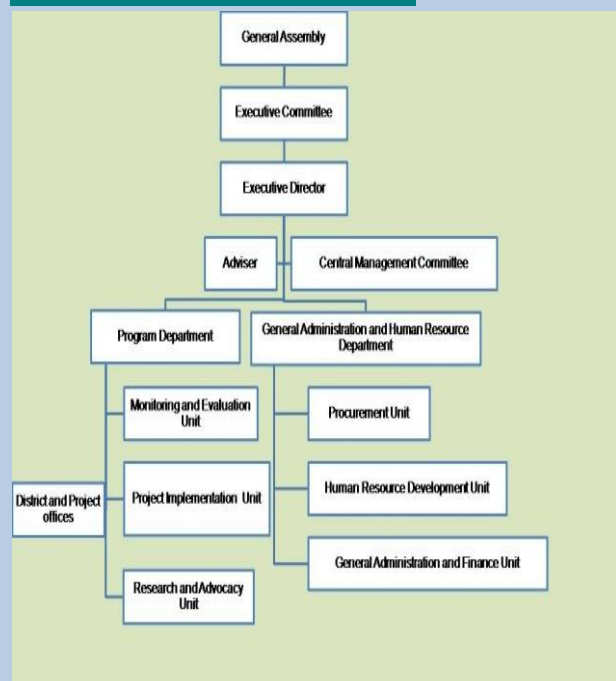


"Able and Effective SAHAS Nepal,
 Advancement of the Poor and the Marginalised."

SAHAS NEPAL

Group of Helping Hands (SAHAS)-Nepal is a nongovernmental social development organisation. Since its inception in 1996, it has been working for community development in rural areas of Nepal in collaboration and partnership with different government and non government organisations. SAHAS-Nepal has been implementing various community development projects in the field of food security, livelihood improvement, education, health, infrastructure and community empowerment. By the end of 2010, more than 15,000 households and 760 Community Based Organisations (CBOs) have benefited from community development work. Of late, we have directed our development efforts towards strengthening the capacity of the local community and local development partner organisations for sustainable development.

ORGANISATIONAL STRUCTURE



VISION

Orient backward, marginalised and socio-economically vulnerable communities towards attaining the improved standard of living in line with the sustainable development concept by providing them with the equal opportunity of access to developed knowledge, skills and resources.

MISSION

Begin the process of action oriented learning by enhancing the awareness and capacity of the community.

GOAL

To reduce extreme food insecurity by improving livelihood and empowering marginalised communities.

WORKING APPROACH

bottom up
rights based
participatory
people centred
resource sharing
lobby and advocacy

NORMS AND VALUES

Nationality, Ecology, Equality, Impartiality, Culture sensitiveness, Special concerns towards the poor, Righteousness, Morality, Forgiveness, Participation, Professional competence and training

PARTNER ORGANISATION

EED Germany, FELM-Finland, USC Canada Asia, PAF, PEEDA, LI-BIRD, CIMMYT Nepal, DDC, TBSU, Nepalteam, Sansthatag Bikas Sanjal, Shtrii Shakti, 4 CBOs Network Organisation

MAJOR AREAS OF INTERVENTION

- Community development
 - Livelihood, agriculture, income generating activities
 - Education and training- civic and human rights education, community awareness
 - Community empowerment
 - Institutional development
 - Disaster and relief activities
 - Infrastructure development
 - Health and sanitation
- Social Mobilisation
- Lobby and advocacy



PROGRAMMES AND PROJECTS

- Local Initiative for Food Security Transformation
- Community Empowerment for Food Security and Livelihood Project
- Improving Food Security through Community Organising
- Enhancing Livelihood through Local Effort Project
- Civic Education Project
- Poverty Alleviation Fund Programme
- Biofuel Project
- Home Garden Project
- Hill Maize Research Project